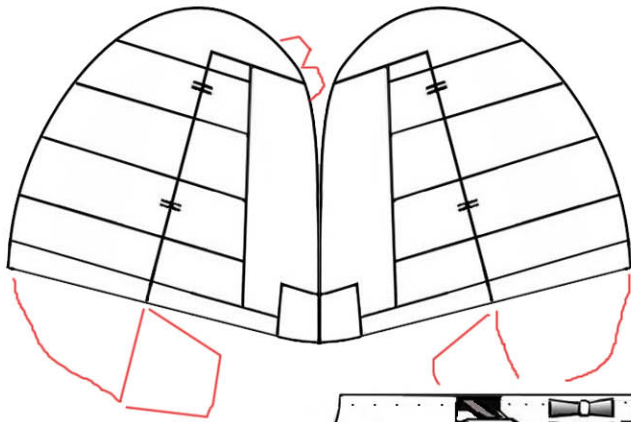


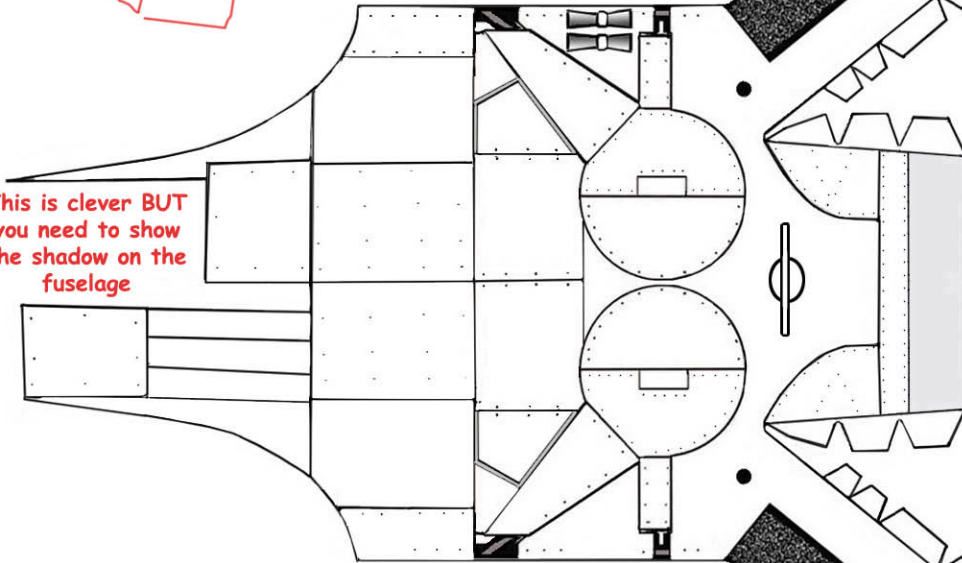
Glen, it's easier on the modeler if the part name is actually on the center section. Also, they're (at that very moment) wondering about dihedral aren't they.

This part MIGHT need reducing a bit. It came out a little large for me



The fin is a bit small and needs glue tabs ALL around it

This is clever BUT you need to show the shadow on the fuselage



ROLL THIS FORWARD SECTION ONLY ?

DON'T SCORE BOTH SIDES HERE ?

SCORE TABS

CENTER LOWER WING

(COMPLEX SHAPE SEE INSTRUCTIONS)

Confusing

THIS CAN BE USED TO STIFFEN AND FORM SLIGHT CONCAVITY BY GLUEING IN FUSE ABOVE GEAR AND FORMING WHILE GLUE SETS

This piece is ~~about~~ the most BRILLIANT piece of card-engineering I've seen in a long time. Tried it first and got messed up (and frustrated:(but the second try was magic ! Needs a line drawing showing the HOW nicely the wing roots are formed- as well as the monsteros underbelly